



Rodundwerke I (AT) Hydro Power/ New Headrace System

Country	Austria
Type	Hydro Power Plant
Client	Illwerke vkw AG
Main Contractor	G. Hinteregger & Söhne Baugesellschaft m.b.H
Execution of the work	Renesco GmbH
Construction Period	2022-2023

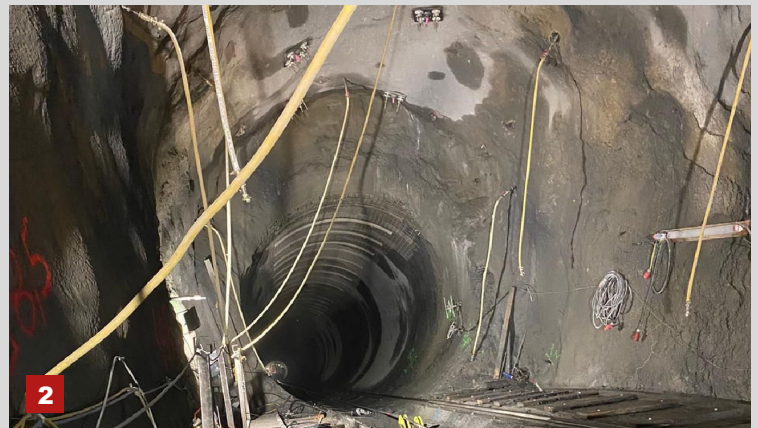
Project Description

Renew of the power descent of the existing Rodundwerk I, which was built in the 1940s. This includes the new construction of headrace system consisting of the entire pressure shaft from the inlet structure in Latschau (basin) as well as the subsequent distribution pipeline and its integration into the existing powerhouse in Rodund. In the course of construction, the 340m long Latschau access tunnel and a 330m long section of the waterway will be driven conventionally, i.e. using drill and blast. All other tunnels with a total length of around 700m (Rodund access tunnel, flat section of pressure shaft and inclined shaft with a 36° inclination) are driven with a hard rock tunnel boring machine. This in-house TBM with an excavation diameter of 4.50m is used both in the flat sections and in the inclined shaft - here with additional fallback protection.

Scope of Service

Supply & Install of the waterproofing system according to the OBV guideline "tunnel waterproofing".

- Geomembrane, 3mm, PVC-P
- Drainage layer/ Geogrid
- Geotextile, 900g/sqm, PP
- Water barriers, 600mm, PVC-P
- Adhesive tapes/ strips
- Steel clamping/ flanging
- Injection system for structural grouting
- Penetration devices DN200



1. Distribution Pipeline
2. Inclined Shaft
3. Pressure Tunnel